

Recorded by MARIAH CAREY

# Jesus Born On This Day

For SATB and Piano

Performance Time: Approx. 3:15

Arranged by  
ROGER EMERSON

Words and Music by  
MARIAH CAREY and WALTER AFANASIEFF

Moderato, flowing ♩ = 80

N.C. F/E B $\flat$ (add2)/D C/E Fsus F

*mp legato*

Musical notation for the piano introduction, consisting of two staves in 4/4 time. The melody is in the right hand, and the bass line is in the left hand. The tempo is Moderato, flowing, with a quarter note equal to 80 beats per minute. The key signature has one flat (B-flat).

Solo/Small group\*\*

5 *mp*

Musical notation for the vocal line, starting at measure 5. It is a single staff in 4/4 time, with a mezzo-piano (*mp*) dynamic. The melody is in the right hand.

To - day a child is \_\_ born on earth.

Soprano *Unis. mp*

Alto

Tenor *Unis. mp*

Bass

To - day a child is \_\_ born on

Musical notation for the SATB vocal parts. It consists of four staves: Soprano, Alto, Tenor, and Bass. The dynamics are mezzo-piano (*mp*) and the style is unison (*Unis.*). The lyrics are: "To - day a child is \_\_ born on".

N.C. B $\flat$ maj7 C(add2)/E F B $\flat$ maj7 C(add2)/E

Musical notation for the piano accompaniment, consisting of two staves in 4/4 time. The melody is in the right hand, and the bass line is in the left hand. The dynamics are mezzo-piano (*mp*).

\*\*Optional Children's Chorus

Copyright © 1994 Sony Songs Inc., Rye Songs, Sony Tunes Inc. and Wallyworld Music  
This arrangement Copyright © 1995 Sony Songs, Inc., Rye Songs, Sony Tunes Inc. and Wallyworld Music  
All Rights Administered by Sony Music Publishing, 8 Music Square West, Nashville, TN  
International Copyright Secured All Rights Reserved

2  
9

To - day the glo - ry of God \_\_\_\_\_ shines ev-'ry - where \_ for \_\_\_\_\_  
earth.

This system contains the vocal line and piano accompaniment for measures 2 through 9. The vocal line begins with a treble clef and a key signature of one flat. The piano accompaniment is shown in both treble and bass clefs, with the bass clef providing a steady harmonic foundation.

F Bb(add2)/D Bbm/Db A/C# Dm

This system shows the piano accompaniment for measures 2 through 9, including the chord progression: F, Bb(add2)/D, Bbm/Db, A/C#, and Dm. The notation includes fingerings and articulation marks for both hands.

12

all of the world. \_ Oh, Je - sus, \_ born on this day, \_  
Je - sus, \_ born on this day, \_

*mf*

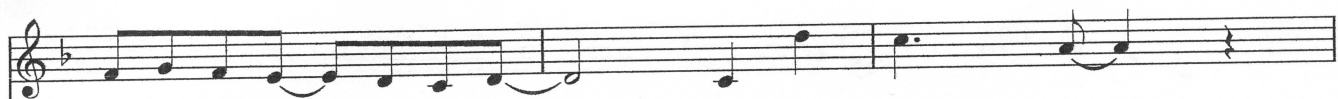
This system contains the vocal line and piano accompaniment for measures 12 through 15. The vocal line starts with a treble clef and includes the lyrics "all of the world. Oh, Je - sus, born on this day, Je - sus, born on this day,". A dynamic marking of *mf* is placed above the first measure. The piano accompaniment is in both treble and bass clefs.

G/B C C/E F A7/C# Dm

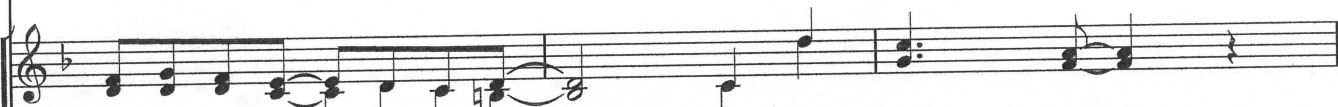
*mf*

This system shows the piano accompaniment for measures 12 through 15, including the chord progression: G/B, C, C/E, F, A7/C#, and Dm. A dynamic marking of *mf* is placed above the piano part in the second measure.

15



He is our light\_ and sal - va - tion. Oh, Je - sus, \_



He is our light\_ and sal - va - tion. Oh, Je - sus, \_



G/B C G C C/E F



18



born on this day, \_ He is the King\_ of all na - tions.



born on this day, \_ He is the King\_ of all na - tions.



A7/C# Dm G/B C G C



Be - hold the Lamb of God has come.

Be - hold the Lamb of God has

F/A                      B $\flat$ (add2)/D                      C(add2)/E                      F                      B $\flat$ (add2)/D                      C(add2)/E

Be - hold the Sav - ior is born, \_\_\_\_\_ sing of His love \_\_\_\_\_ to \_\_\_\_\_

come.

F                      B $\flat$ (add2)/D                      B $\flat$ m/D $\flat$                       A/C $\sharp$                       Dm

28

ev - 'ry - one. — Oh, Je - sus, — born on this day, —

Je - sus, — born on this day, —

G/B C C/E F A7/C# Dm

31

heav - en - ly child \_ in the man - ger. Oh, Je - sus, —

heav - en - ly child \_ in the man - ger. Oh, Je - sus, —

G/B C G C C/E F

born on this day, \_ He is our Lord \_ and our Sav - ior. To - day our

born on this day, \_ He is our Lord \_ and our Sav - ior.

A7/C# Dm G/B C G C F/A

*mf*

hearts re - jice in Him. to - day the

To - day our hearts re - jice in Him.

Bb(add2)/D C(add2)/E F Bb(add2)/D C(add2)/E F

*mf*

42

light of His birth \_\_\_\_\_ fills us with hope \_ and \_ brings peace on earth. \_ Oh,

$B\flat(\text{add}2)/D$   $B\flat m/D\flat$   $A/C\sharp$   $Dm$   $G/B$   $C$

45

*f*  
Je - sus, \_\_\_\_\_ born on this day, \_\_\_\_\_ He is our light \_ and sal - va -

*f* div.  
Je - sus, \_\_\_\_\_ born on this day, \_\_\_\_\_ He is our light \_ and sal - va -

*f*  
 $C/E$   $F$   $A7/C\sharp$   $Dm$   $G/B$   $C$   $G$

- tion. Oh, Je - sus, \_ born on this day, \_ He is the King \_ of all na -

- tion. Oh, Je - sus, \_ born on this day, \_ He is the King \_ of all na -

- tion. Oh, Je - sus, \_ born on this day, \_ He is the King \_ of all na -

C C/E F A7/C# Dm G/B C G

- tions. To - day a child is \_ born on

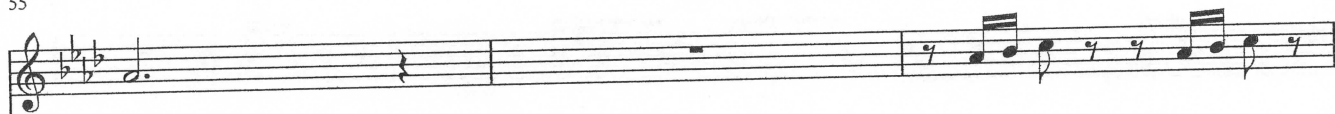
- tions.

- tions.

C A $\flat$ (add2) A $\flat$ (add2)/G D $\flat$ (add2)/F E $\flat$ /G



55



earth.

He is light,

He is love,



To - day a child is \_ born on earth.



A $\flat$ (add2)

A $\flat$ (add2)/G D $\flat$ (add2)/F

E $\flat$ /G

A $\flat$

A $\flat$ /G

58



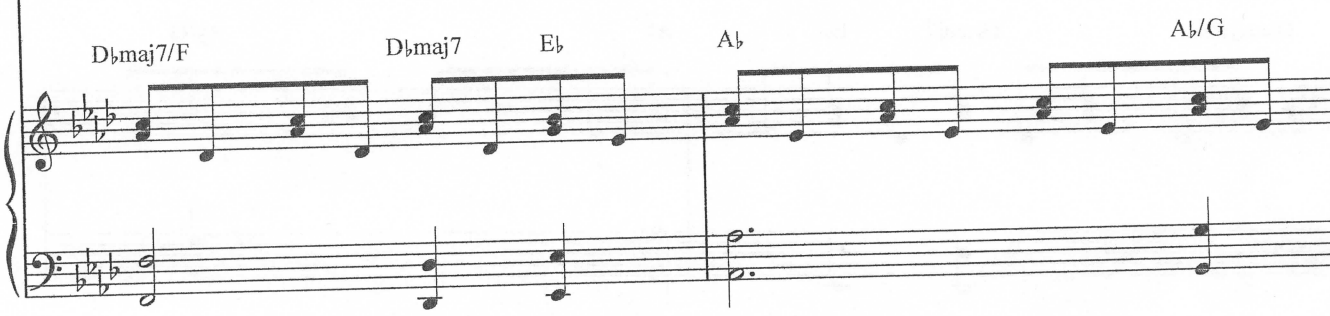
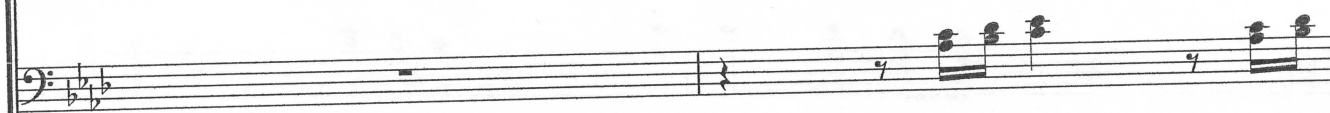
He is grace, born on Christ - mas day. He is light,

He is love,



He is light,

He is



D $\flat$ maj7/F

D $\flat$ maj7

E $\flat$

A $\flat$

A $\flat$ /G

He is grace, born on Christ - mas day. He is light, He is love,

love, born on Christ - mas day. He is light, He is

D $\flat$ maj7/F

D $\flat$ maj7

E $\flat$

A $\flat$

A $\flat$ /G

He is grace, born on Christ - mas day. He is light, He is love,

love, born on Christ - mas day. He is light, He is

D $\flat$ maj7/F

D $\flat$ maj7

E $\flat$

A $\flat$

A $\flat$ /G

64



He is grace, born on Christ - mas day. He is light, He is love,



love, born on Christ - mas day. He is light, He is



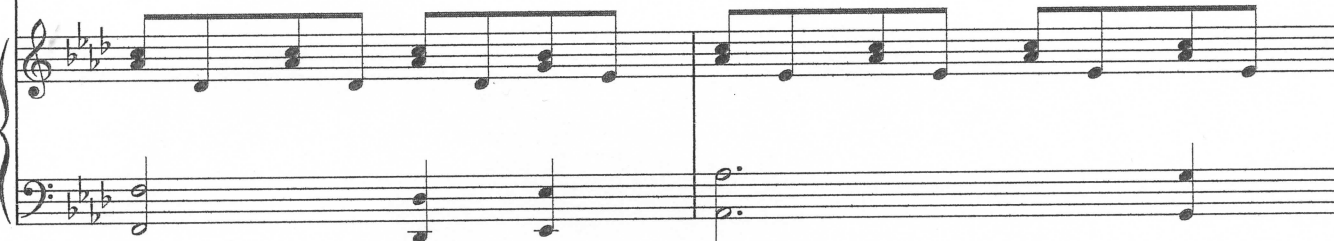
D $\flat$ maj7/F

D $\flat$ maj7

E $\flat$

A $\flat$

A $\flat$ /G



66

*molto rit.*



He is grace, born on Christ - mas day!

*molto rit.*



love, born on Christ - mas day!

*molto rit.*



D $\flat$ maj7/F

D $\flat$ maj7

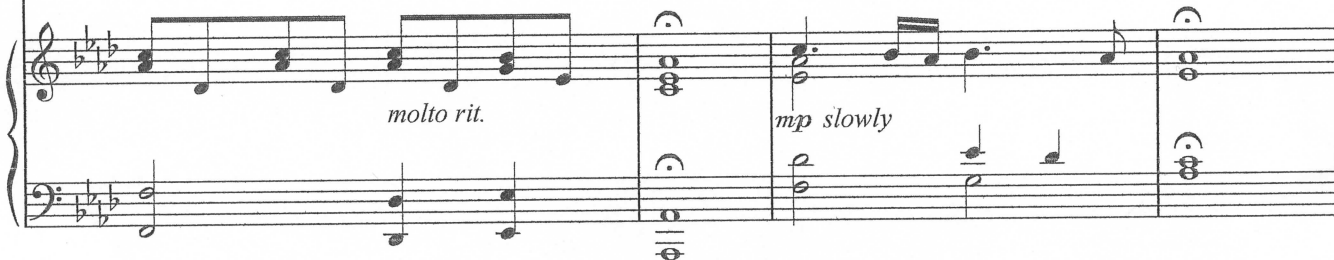
E $\flat$

A $\flat$

D $\flat$ maj7/F

E $\flat$ 7/G

A $\flat$



*molto rit.*

*mp slowly*